

SOCIETY OF WOMEN IN TAXATION

TAX AND TECH SUMMIT 2026

Topic: Digital Revenue, Digital Risk: *What Every Woman in Taxation Should Know About AI and Cybersecurity*

By

Oluwatoni Falade

**VICE PRESIDENT,
CYBER SECURITY EXPERT ASSOCIATION OF NIGERIA (CSEAN)**

16 March, 2026

DIGITAL REVENUE

DIGITAL RISK

Navigating AI and Cybersecurity as a Woman in Taxation




Understanding Digital Revenue


How modern economies generate income in the digital age




 **E-Commerce & Fintech**
Online sales, fintech & SaaS taxation

 **Cross-Border Transactions:** currency conversion, complex regulatory compliance (AML/KYC), and logistics management.

 **Digital Platforms**

 **AI-Driven Forecasting:**
AI financial prediction models

 **Data Monetization:**
Value created from data analytics

The New Reality of Taxation

Tax systems are now digital-first, data-driven and API-enabled

E-filing, e-invoicing, real-time reporting and digital VAT monitoring

AI-enabled analytics in compliance and audit selection

Cross-border digital commerce

Cloud-based accounting ecosystems

The Rise of AI in Taxation

Risk-based
audit
selection

Predictive
compliance
analytics

Fraud
detection
models

Automated
advisory tools

Transfer
pricing

anomaly
detection

What Is Digital Risk?

Digital risk in tax practice includes:

Data breaches of taxpayer records

Ransomware attacks

Phishing targeting finance teams

AI model manipulation

Cloud misconfigurations

Insider data misuse.

Real-World Risk Landscape

Globally:

- Ransomware attacks on government agencies
- AI-driven phishing targeting finance executives
- Deepfake fraud affecting financial approvals
- Financial and tax data is among the most attacked categories globally.

Nigerian Regulatory Context

In Nigeria, digital taxation intersects with:

- Federal Inland Revenue Service digital modernization initiatives
- Nigeria Data Protection Commission -data protection enforcement
- National Information Technology Development Agency cybersecurity -IT regulation

Why Tax Professionals Are Prime Targets

- Tax professionals handle:

Corporate
financial
statements

Personal
income
records

Bank details

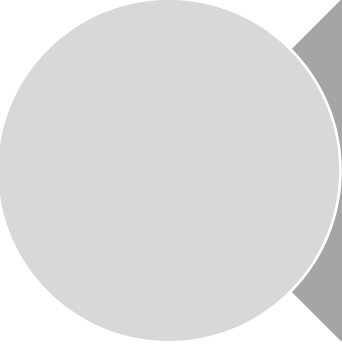
Trade data

Cross-border
transaction
data

Why This Conversation Matters for Women in Tax



Tax professionals are custodians of high-value financial data



Women are increasingly leading tax advisory, compliance, and policy functions



Digital transformation introduces both opportunity and exposure

Case Study 1 – AI Data Leakage

A tax consultant uploads client financial records into a public AI chatbot to “improve analysis.”

Risk:

- Confidentiality breach
- Data retention by third party
- Professional misconduct exposure

Lesson: Only use enterprise-approved AI tools.

Case Study 2 – Ransomware Before Filing Deadline

A tax firm's systems are encrypted days before filing deadlines.

Impact:

- Missed compliance timelines
- Financial penalties
- Client attrition
- Reputational damage

Core Cybersecurity Concepts for Women in Tax

Classification

Personal identification information, Corporate financial statements, Bank account details, Taxpayer identification numbers, Revenue declarations, Transaction histories.

Types of Data

Public Data

Internal Data

Confidential Data

Highly Sensitive / Restricted Data

Understanding data classification allows tax professionals to:

- Protect client confidentiality
- Reduce cyber risk exposure
- Ensure compliance with data protection regulations
- Strengthen internal governance and risk management practices

Cybersecurity Basics

Every Tax Professional Should Know



Encryption (At Rest & In Transit)



Protects sensitive tax data by converting it into coded information that unauthorized users cannot read — both when stored and when transmitted online

Multi-Factor Authentication (MFA)



Requires two or more identity checks (password, phone code, biometrics) before access is granted, reducing the risk of unauthorized system entry.

Secure Cloud Architecture



Ensures tax data stored on cloud platforms is protected through encryption, access controls, and proper system configuration

Incident Response Protocols



Structured procedures that enable organizations to quickly detect, respond to and recover from cyber incidents such as data breaches or ransomware attacks

Vendor Risk Management

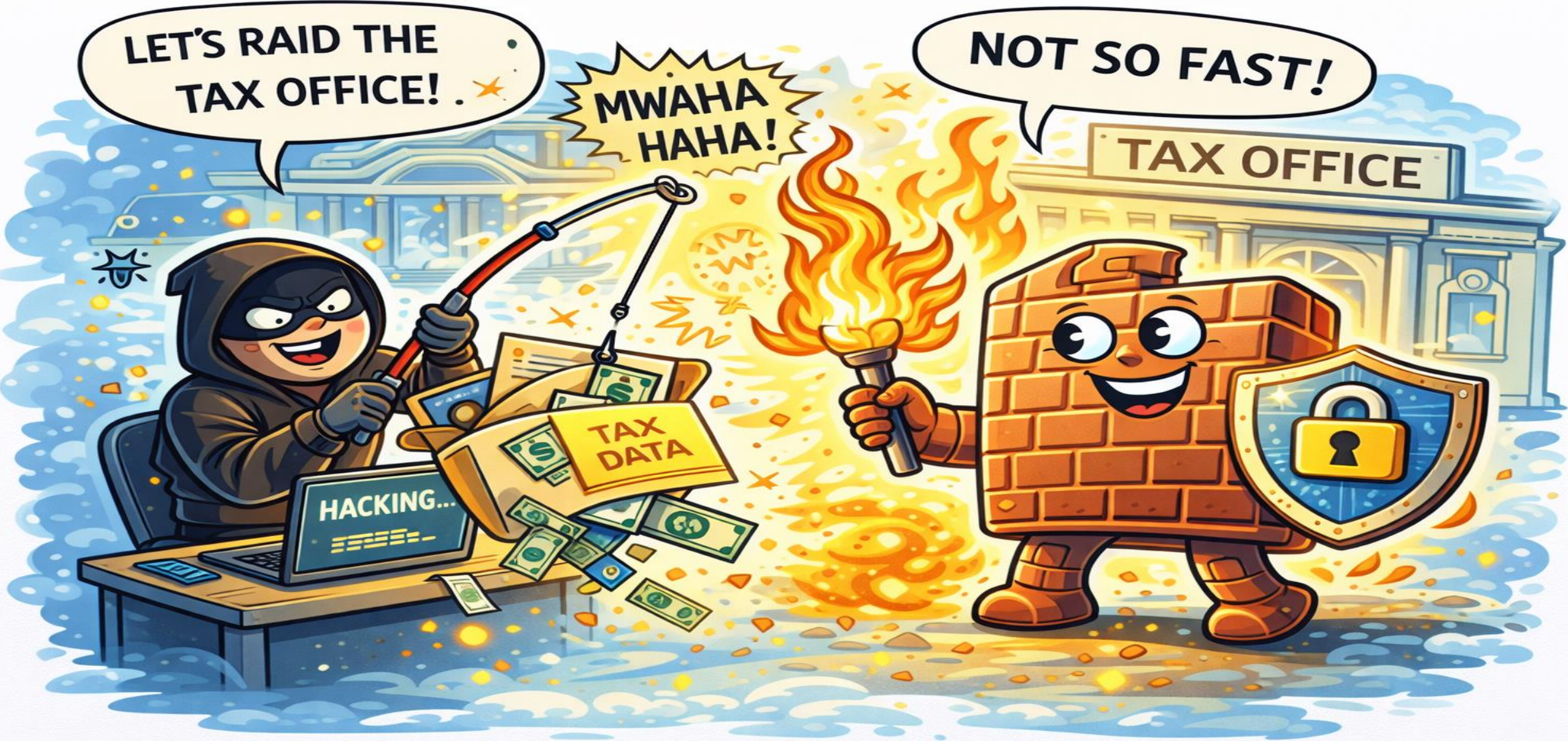


Evaluates the cybersecurity practices of third-party providers to ensure that external software or platforms do not expose sensitive taxpayer information



Cybersecurity is no longer just an IT function — it is a core responsibility for every tax professional handling financial data.

Think you can sneak past? Not on our watch—women in tax are securing revenue and AI knows it!"



Skills Every Woman in Tax Should Develop

Technical	Strategic:
AI fundamentals	Policy literacy
Cyber risk awareness	Risk management
Data analytics	Ethical AI governance
Cloud security basics	Cross-functional collaboration

Ethical Considerations

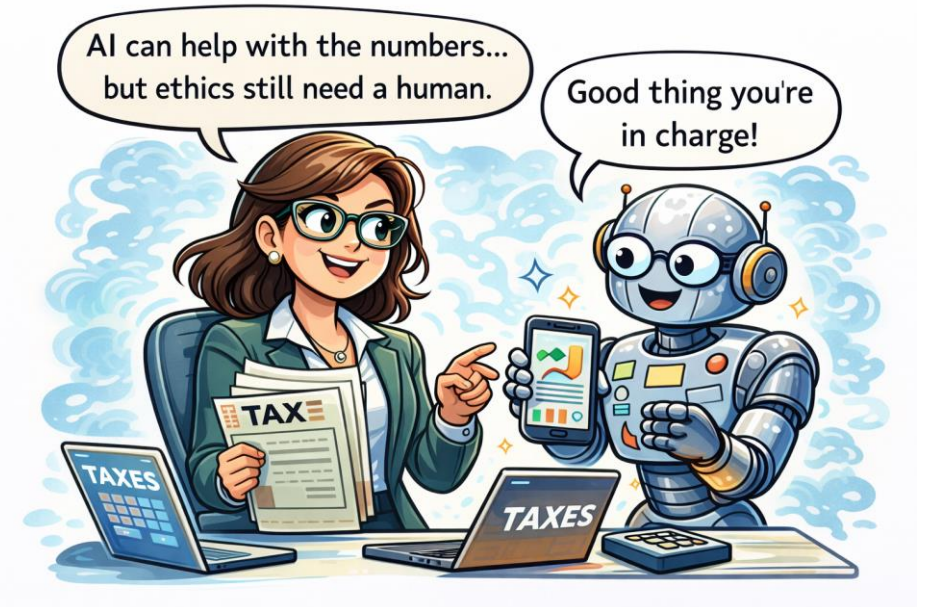
Responsible AI
use

Confidentiality
preservation

Transparency in
automated advisory

Data
minimization

Bias mitigation



***Ethics is the backbone
of digital taxation.***

Online Safety Tips

Protect Client Data Rigorously 

Use Strong Authentication

Secure Remote Work Environments

Protect Your Professional Identity Online

Update Devices OS, Tax Preparation Software and Antivirus Regularly

Watch for Insider Threats

Be Careful with Data Storage and Transfers

Recognize Phishing Attacks 

Report Suspicious Activity Immediately

Build Cybersecurity Awareness

Policy and Regulatory Awareness

Stay informed about:

Nigerian data protection frameworks

Cybercrime legislation

Global digital tax reforms

OECD digital taxation developments

The Leadership Imperative

- Women must not only participate in digital tax transformation —They must shape it.

Leadership in:

• Digital policy

• Compliance design

• AI governance

• Cyber risk oversight



Oluwatoni Falade